



PALAIS DE FES  
SUITES & SPA  
FEZ, MOROCCO

## MAYSSA Suite

65 sqm / 700 sqft | King Bed | Medina View | Living Room Area | Desk Area

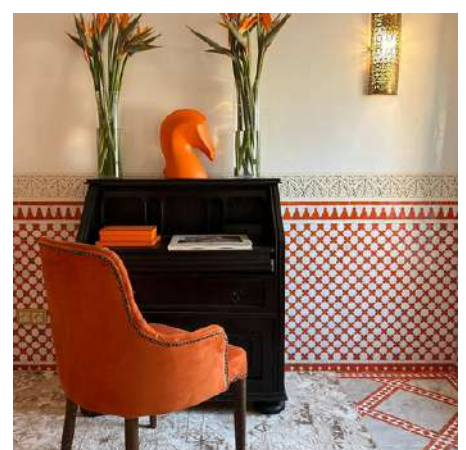


The **Mayssa Suite** is a spacious 65 sq. meter tribute to Fez's rich heritage, featuring a king size bedroom, living room, office area, two en suite bathrooms, and dressing rooms.

It boasts exquisite plaster craftsmanship, handmade tiles, and masterful woodcraft, providing an immersive cultural experience.

The breathtaking view of the Medina from the suite adds to the enchanting and unforgettable experience.

The Moroccan-inspired suite is luxurious and authentic, with every detail thoughtfully designed. The suite's magic orange color enhances the overall ambiance, exclusively for our guests who receive a VIP welcome.





PALAIS DE FES  
SUITES & SPA  
FEZ, MOROCCO

## MORJANA Suite

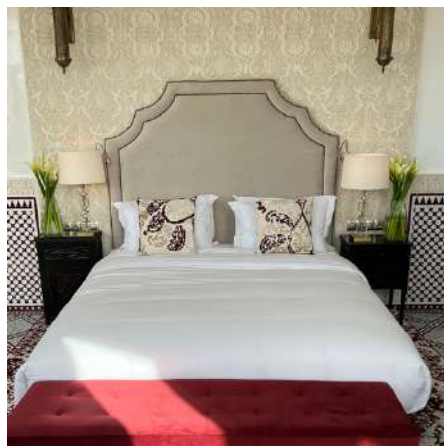
45 sqm / 484 sqft | 180° Medina View | Living Room Area | Desk Area



The **Morjana Suite** is a 45 sq. meter tribute to Fez's rich heritage, featuring a king size bedroom with a 180° view of the Medina, living room, office area and a panoramic view bathroom. It boasts exquisite plaster craftsmanship, handmade tiles, and masterful woodcraft, providing an immersive cultural experience.

The unobstructed view of the Medina made possible by a wall entirely composed of windows adds to the enchanting and timeless experience.

The Moroccan-inspired suite is luxurious and authentic, with every detail thoughtfully designed. The suite's Rubi red color enhances the overall ambiance, exclusively for our guests who receive a VIP welcome.

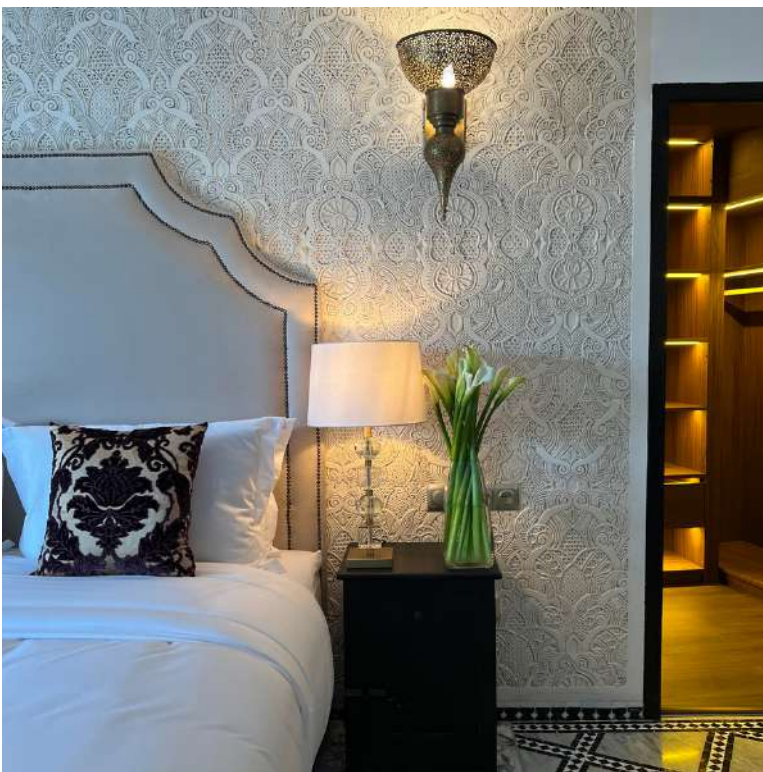




PALAIS DE FES  
SUITES & SPA  
FEZ, MOROCCO

## LAYLA Suite

55 sqm / 592 sqft | King Bed | Medina View | Living Room Area | En-suite fireplace | Private Panoramic Terrace



The Layla Suite is a 55 sq.m tribute to Fez's rich heritage, featuring a king size bedroom, living room, a walking dressing room, an en-suite fireplace and a private terrace overlooking the Medina of Fez. It boasts exquisite plaster craftsmanship, handmade tiles, and masterful woodcraft, providing an immersive cultural experience.

The fireplace is a true work of art and can be setup at any moment by the butler bringing a cozy and intimate feel to the atmosphere.

The Private Terrace provides a picturesque backdrop to savor delicious cuisine from the Palace's 40-year-old restaurant creating an unforgettable experience.

The suite's Black diamond color enhances the overall ambiance, exclusively for our guests who receive a VIP welcome.





PALAIS DE FES  
SUITES & SPA  
FEZ, MOROCCO

## AMIRA Suite

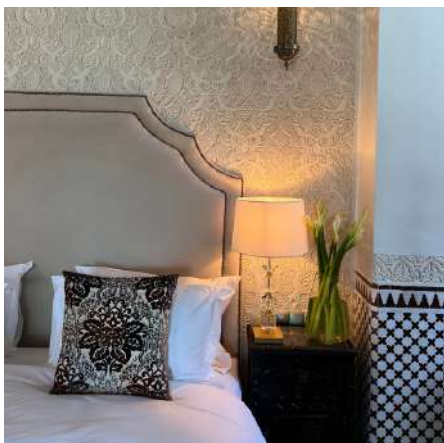
35 sqm /377 sqft | Medina View | Living Room Area | Desk Area | En-suite Bathtub | Walk-in Closet



The Amira Suite is a 35 sq. meter tribute to Fez's rich heritage, featuring a king size bedroom, living room, office area, a panoramic view bathroom with a bathtub and a shower overlooking the magical Fez Medina, and a walking dressing room.

It boasts exquisite plaster craftsmanship, handmade tiles, and masterful woodcraft, providing an immersive cultural experience. The 14th century restored sculpted door of the suite adds to the enchanting and timeless experience.

The Moroccan-inspired suite is luxurious and authentic, with every detail thoughtfully designed. The suite's chocolate brown color enhances the overall ambiance, exclusively for our guests who receive a VIP welcome.





PALAIS DE FES  
SUITES & SPA  
FEZ, MOROCCO

## KARIMA Suite

45 sqm / 484 sqft | King Bed | Medina View | Living Room Area | En-suite Fireplace | Private Panoramic Terrace



The [Karima Suite](#) is a 45 sq. meter tribute to Fez's rich heritage, featuring a king size bedroom, separate living room area, an en-suite fireplace and a private terrace overlooking the magical Fez Medina. It boasts exquisite plaster craftsmanship, handmade tiles, and masterful woodcraft, providing an immersive cultural experience.

The fireplace is a true work of art and can be setup at any moment by the butler bringing a cozy and intimate feel to the atmosphere.

The Private Terrace provides a picturesque backdrop to savor delicious cuisine from the Palace's 40-year-old restaurant creating an unforgettable experience. The suite's chocolate brown color enhances the overall ambiance, exclusively for our guests who receive a VIP welcome.





PALAIS DE FES  
SUITES & SPA  
FEZ, MOROCCO

# — SULTANA PRIVATE RIAD —

-175 m<sup>2</sup>-



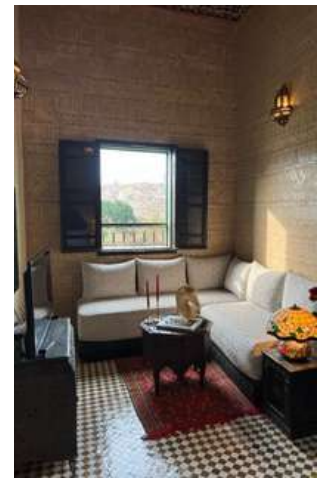
The Sultana Private Riad, spread across 175 m<sup>2</sup> in a secluded location, provides an exceptional and exclusive experience with access to the Palace's multitude of services.





PALAIS DE FES  
SUITES & SPA  
FEZ, MOROCCO

Featuring two entrances - an independent one and an en-property entrance through a private terrace - the Riad can accommodate up to five guests around a patio and a delightful living room adorned with a cozy, flickering fireplace.



This quintessentially Moroccan dwelling embodies the art of privacy and intimacy while showcasing breathtaking Medina views from every corner, making it the perfect destination for a family gathering. Additionally, a private Butler is available to help arrange barbecues, dinners, or small events.